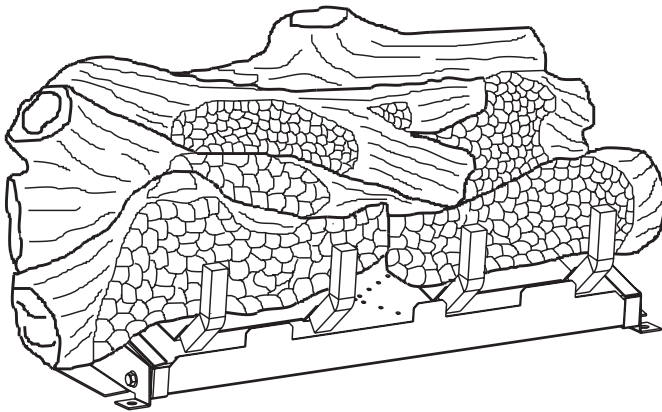




# INSTALLATION INSTRUCTIONS AND OWNER'S MANUAL

The *White Mountain* Log Collection



## WARNINGS

If the information in this manual is not followed exactly, a fire or explosion may result causing property damage, personal injury or loss of life.

- Do not store or use gasoline or other flammable vapors and liquids in the vicinity of this or any other appliance.

### WHAT TO DO IF YOU SMELL GAS

- Do not try to light any appliance.
  - Do not touch any electrical switch; do not use any phone in your building.
  - Immediately call your gas supplier from neighbor's phone. Follow the gas supplier's instructions.
  - If you cannot reach your gas supplier, call the fire department.
- Installation and service must be performed by a qualified installer, service agency or the gas supplier.

**LOG SET FOR UNVENTED  
GAS LOG HEATER  
OR  
VENTED DECORATIVE APPLIANCE**

### MODELS

LS-16C-1  
LS-18C-1  
LS-24C-1  
LS-30C-1



**EFFECTIVE DATE  
SEPTEMBER, 2003**

**Installer: Please leave these instructions with the consumer.**

**Consumer: Please retain these instructions for future use.**

Log sets comply with ANSI Z21.11.2 Unvented Heaters and also comply with ANSI Z21.60 Decorative Vented Appliances for Solid Fuel Burning Fireplaces. State or local codes may only allow operation of log sets in a vented configuration. Check your state or local codes.

**WARNING: If not installed, operated and maintained in accordance with the manufacturer's instructions, this product could expose you to substances in fuel or from fuel combustion which can cause death or serious illness.**

# TABLE OF CONTENTS

Section	Page
Important Installation Guidelines .....	2
General Information .....	3
Log Placement .....	3
LS-16C-1 Photos .....	4
LS-18C-1 Photos .....	5
LS-24C-1Photos .....	6
LS-30C-1 Photos .....	7
Parts List & Parts View .....	8
How to Order Repair Parts .....	8

## IMPORTANT INSTALLATION GUIDELINES

### **Proper Log Placement**

Log placement is critical to proper burner performance. Logs must be correctly positioned onto the burner. The photos in this manual show the proper pinned position for logs on this set. Owners need to be shown proper log placement and instructed not to move the logs.

Logs must fit firmly onto the burner when positioned as shown in the photos. Misformed logs or logs with sloppy pin holes must be replaced.

**Proper Placement of Rock Wool and Decorative Lava Rock**  
Rock wool can be added to burners for a glowing ember effect. It must be positioned only on the front portion of the burner. The photos in this manual show the proper placement of rock wool.

Decorative lava rock or small wood pieces should never be placed on the burner. These items are only for placement on the floor of the fireplace or firebox.

### **Proper Primary Airflow into Burner**

For proper burner operation and flame appearance, the flow of primary air into the venturi tube, located on the rear of the burner, must not be reduced. This flow of air is reduced if dirt, lint or other obstructions build-up around or inside the venturi. Any obstruction in the venturi tube area must be removed. The flow of air into the venturi is also reduced if the gas orifice isn't centered in the venturi inlet and/or is not aligned with the venturi. Any misalignment of the burner orifice may be corrected by bending the shutter cap holding the orifice to the inlet of the venturi tube.

### **Ceiling Fans, Portable Fans or Logs Installed Near Cold Air Returns**

Ceiling fans or oscillating floor type fans need to be monitored during the operation of vent-free logs. If the air blows directly into the flame causing it to impinge on the log set, or firebox, it should be turned off or redirected. Ceiling fans could be reversed to possibly eliminate flame impingement, and the floor fan could be redirected. Upon installation, be aware of any cold air returns or vents in the proximity of the log set. Any draft created around a vent-free log set can cause the flame to impinge on the log and create a sooting situation.

**WARNING:** Do not allow fans to blow directly into the fireplace. Avoid any drafts that alter burner flame patterns.

**WARNING:** Do not use a blower insert, heat exchanger insert or other accessory not approved for use with this heater.

### **Candles**

Avoid the use of scented or decorative candles while the log set is in operation. Candles produce a residue in the air that creates a soot like substance. Burning candles while the log set is operating magnifies the problem. It should be noted that candles, in general, produce soot. The amount of time burned and the quantity of candles burned will determine the amount of soot produced and deposited.

### **Make Owners Aware of Proper Log Set Operation**

Properly installed and properly maintained log sets do not deposit soot on the logs. If users see soot appear on a log, call for service. Do not continue to operate the log set.

### **Sunken Fireplace**

If installing this unit into a sunken fireplace, you must raise the floor to insure adequate airflow and guard against sooting. Raise fireplace floor using a non-combustible material, which is secure.

### **Glass Doors**

Make sure that glass doors are open during all operations of the logset. The opening of the glass door frame should be the dimension used for the minimum front opening of the firebox.

### **Woodburning Fireplaces**

The interior of the firebox and the chimney should be cleaned and free of all creosote before installing a gas burning log set. Creosote will soften when heated and can drop on the logset causing odors and possibly sooting.

**WARNING:** Before installing in a solid-fuel burning fireplace, the chimney flue and firebox must be cleaned of soot, creosote, ashes and loose paint by a qualified chimney cleaner.

# GENERAL INFORMATION

## Qualified Installing Agency

Installation and replacement of gas piping, gas utilization equipment or accessories and repair and servicing of equipment shall be performed only by a qualified agency. The term "qualified agency" means any individual, firm, corporation, or company that either in person or through a representative is engaged in and is responsible for (a) the installation, testing, or replacement of gas piping or (b) the connection, installation, testing, repair, or servicing of equipment; that is experienced in such work; that is familiar with all precautions required, and that has complied with all the requirements of the authority having jurisdiction.

The installation must conform with local codes or, in the absence of local codes, with the *National Fuel Gas Code, ANSI Z223.1/NFPA54*.\*

\*Available from the American National Standards Institute, Inc. 11 West 42nd St., New York, N.Y. 10018.

**State of Massachusetts:** The installation must be made by a licensed plumber or gas fitter in the Commonwealth of Massachusetts.

In the Commonwealth of Massachusetts vent free products are not approved.

State of Massachusetts requirement for installation of vented decorative appliance in a vented fireplace is the following:

A vented decorative gas appliance must be installed in a vented fireplace only in the state of Massachusetts. The vent damper must be removed or welded permanently open.

# LOG PLACEMENT

Before you begin: Do not, handle these logs with your bare hands! Always wear gloves to prevent skin irritation. After handling logs, wash your hands gently with soap and water.

## All Logs

The positioning of the logs is critical to the safe and clean operation of this heater. Sooting and other problems may result if the logs are not properly and firmly positioned in the appliance.

Refer to Figure 1 for the following warning.

**Warning:** Failure to position the parts in accordance with this diagram or failure to use only parts specifically approved with this appliance may result in property damage or personal injury.

## PROPER INSTALLATION SEQUENCE:

### LS-(16, 18, 24, 30)C (Figure 1)

1. Place rear (#4) log onto right, rear pin on rear log support.
  2. Place middle (#1) log between rear log support and burner pan.
  3. Place left, front (#2) log onto two (2) left, front pins on burner pan.
  4. Place right, front (#3) log onto two (2) right, front pins on burner pan.
  5. Place branch (#5) log onto two (2) pins on middle (#1) log.
- Attention:** On 16" log set, middle (#1) log has one (1) pin.
6. Compare the completed log installation with the appropriate photo from pages 4 through 7. Review previous steps to make any necessary adjustments.
  7. Log placement is completed.

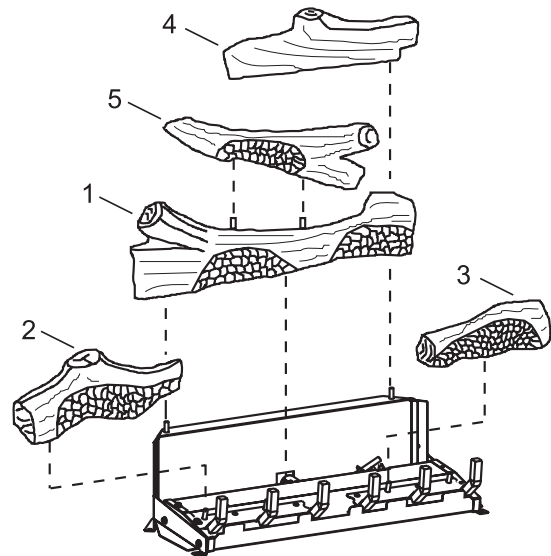
**Attention:** Do not use Figure 1 to order replacement logs. Refer to Page 8 Parts List and Parts View to order logs for your appropriate model number.

Apply loose material (glowing embers) per appropriate Installation Instructions and Owner's Manual. Replacement of loose material (glowing embers) must be purchased from Empire Comfort Systems, Inc. Application of excess loose material (glowing embers) may adversely affect performance of the heater.

**WARNING:** All previously applied loose material must be removed prior to reapplication.

## Replacement Loose Material (glowing embers) Part Number

LS-16C	15998
LS-18C	15999
LS-24C	15970
LS-30C	15970



**Log Placement**  
LS-(16, 18, 24, 30)C Logs

**Figure 1**

The following WARNING applies when log set is installed onto an unvented gas burner assembly.

**WARNING:** This appliance is equipped for (natural or propane) gas. Field conversion is not permitted.

# LS-16C-1 PHOTOS



Photo 2



Photo 4

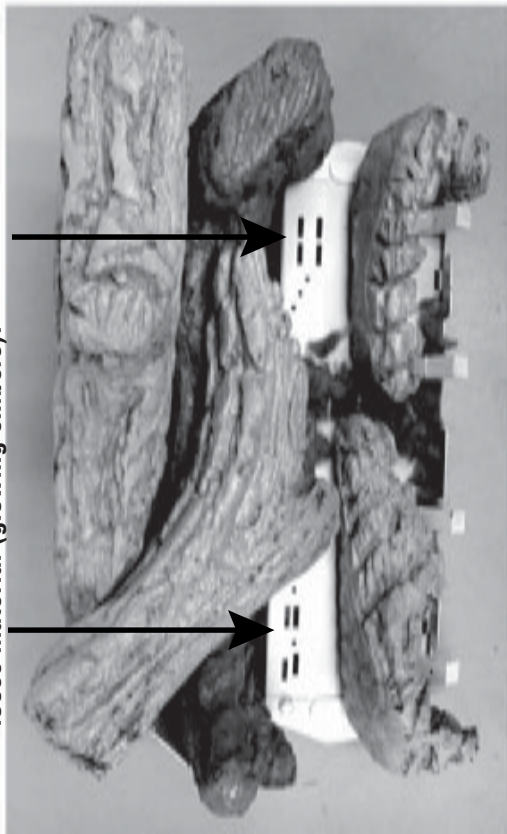


Photo 1

Do not cover any large rear ports with loose material (glowing embers).



Photo 3

# LS-18C-1 PHOTOS



Photo 2



Photo 4

Do not cover any large rear ports with loose material (glowing embers).

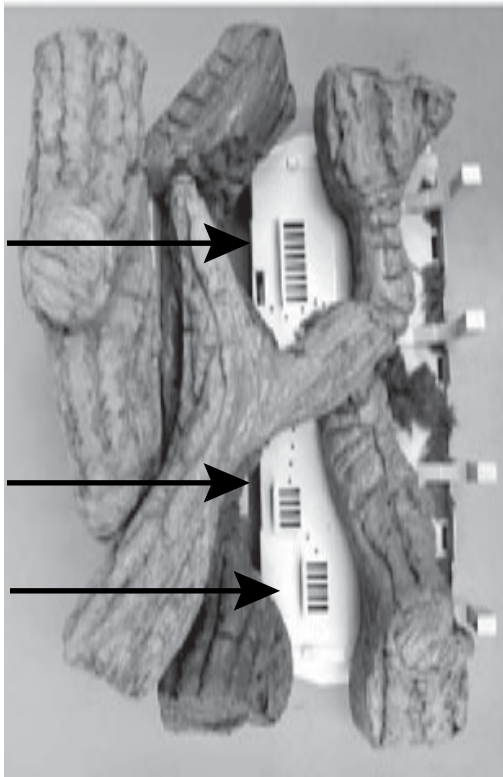


Photo 1



Photo 3

# LS-24C-1 PHOTOS



Photo 2



Photo 4

Do not cover any large rear ports with loose material (glowing embers).

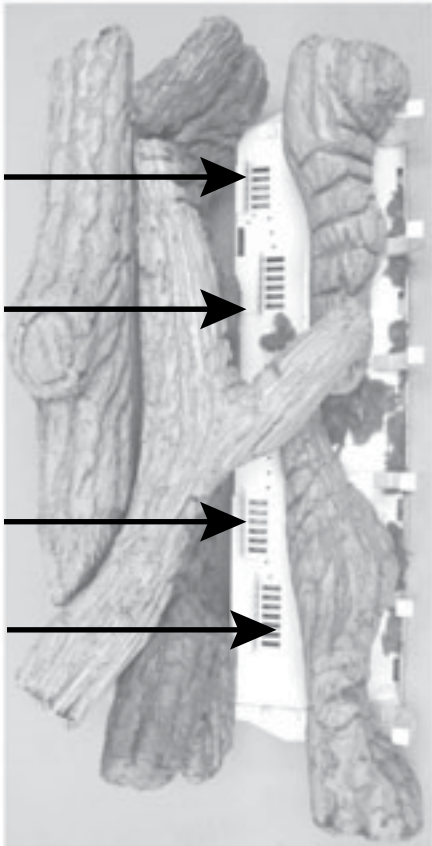


Photo 1



Photo 3

# LS-30C-1 PHOTOS



Photo 2



Photo 4

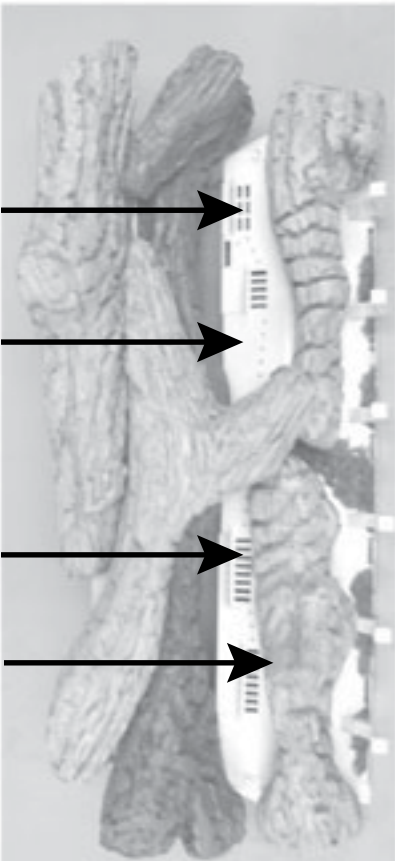


Photo 1

Do not cover any large rear ports with loose material (glowing embers).

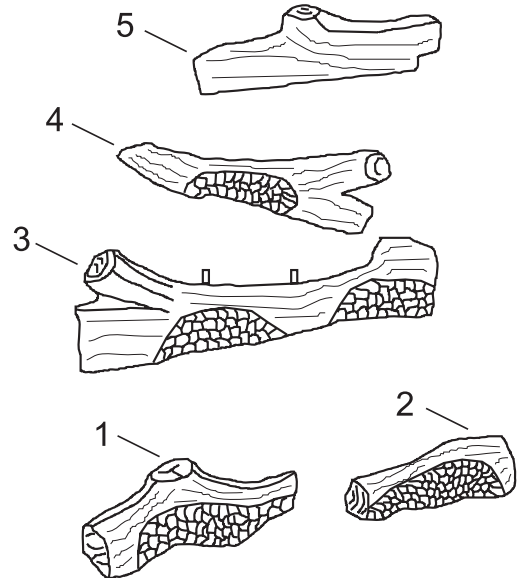


Photo 3

# PARTS LIST & PARTS VIEW

**Attention:** When ordering parts, it is very important that **part number** and **description** of part coincide.

Index No.	Part Number	Description
<b>CHARRED OAK LOG SETS</b>		
1	R-5718	LEFT FRONT LOG - 16"
1	R-5724	LEFT FRONT LOG - 18"
1	R-6391	LEFT FRONT LOG - 24"
1	R-5736	LEFT FRONT LOG - 30"
2	R-5719	RIGHT FRONT LOG - 16"
2	R-5725	RIGHT FRONT LOG - 18"
2	R-5731	RIGHT FRONT LOG - 24"
2	R-5737	RIGHT FRONT LOG - 30"
3	R-5720	MIDDLE LOG - 16"
3	R-5726	MIDDLE LOG - 18"
3	R-5732	MIDDLE LOG - 24"
3	R-5738	MIDDLE LOG - 30"
4	R-5722	BRANCH LOG - 16"
4	R-5728	BRANCH LOG - 18"
4	R-5734	BRANCH LOG - 24"
4	R-5740	BRANCH LOG - 30"
5	R-5721	REAR LOG - 16"
5	R-5727	REAR LOG - 18"
5	R-6392	REAR LOG - 24"
5	R-7139	REAR LOG - 30"



**USE ONLY MANUFACTURER'S REPLACEMENT PARTS. USE OF ANY OTHER PARTS COULD CAUSE INJURY OR DEATH.**

## HOW TO ORDER REPAIR PARTS

Parts can be ordered **only** through your **service person or dealer**. For best results, the **service person or dealer** should order parts through the distributor. Parts can be shipped directly to the **service person/dealer**.

All parts listed in the Parts List have a Part Number. When ordering parts, first obtain the Model Number from the name plate on your equipment. Then determine the Part Number (**not** the Index Number) and the Description of each part from the following appropriate illustration and list. Be sure to give all this information . . .

Appliance Model Number _____	Part Description _____
Appliance Serial Number _____	Part Number _____
Type of Gas (Propane or Natural) _____	

Do not order bolts, screws, washers or nuts. They are standard hardware items and can be purchased at any local hardware store.

Shipments contingent upon strikes, fires and all causes beyond our control.



**Empire Comfort Systems, Inc.**  
 Nine Eighteen Freeburg Ave.  
 Belleville, Illinois 62220-2623

PH: 1-618-233-7420  
 PH: 1-800-851-3153  
 FAX: 1-618-233-7097  
 FAX: 1-800-443-8648  
 E-MAIL: [info@empirecomfort.com](mailto:info@empirecomfort.com)  
 WEB SITE: [www.empirecomfort.com](http://www.empirecomfort.com)